



*The
Floral Art Society of
Queensland Inc.*

presents

“L’Amour des Fleurs”

19th Floral Art Conference

October 11th – 14th 2011

Public Viewing & Demonstrations
by

*Internationally Renowned French Floral Designer
Marie-Francoise Deprez*

to be held at

Cairns Colonial Club Resort
Conference Centre



19th Floral Art Conference

2011

at

Cairns Colonial Club Resort

Presented by

The Floral Art Society of Queensland Inc.

Affiliated with

The Australian Floral Art Association Inc.

&

World Association of Flower Arrangers.

Internationally Renowned Guest Demonstrator

Marie-Francoise Deprez

Organising Committee

FASQ Committee Brisbane

Margaret Ferris	President
Eleanor Lydon	Vice-President
Helen Murray	Show Sec. & Co-ordinator
Robyn Jones	Ass.Co-ordinator
Alexia Loader	Secretary
Lesley Wilshire	Treasurer
Delphine Loney	Editor
Jo Loader	Member

Far Nth Queensland Committee

Angie Lewis	President
Desiree Tenni	Vice-President
Irma Morzone	Treasurer
Esme Dudley	Secretary
Sylvia Reilly	Member
Marion Hickling	Member
Jenny McMiken	Member
Donaleen Simpson	Member
Sheila Wilhelm	Member
Judy Jamieson	Member



Invitation & Welcome to 'L'Amour Des Fleurs'

Invitation from Angela Lewis – Nth. Queensland Show Co-ordinator

On behalf of the Floral Art Society of Queensland, it is my great pleasure to invite you to join us at our 19th Floral Art Conference "L'Amour des Fleurs" – a fusion of Australian and French floral design in the tropics.

I extend an invitation for you to relax and learn through demonstrations and workshops with exciting international designer, Marie-Francoise Deprez. Consider challenging yourselves in the creative competition classes & then sit back and enjoy demonstrations by talented Queensland members and catch up and socialize with floral artists and friends at the Alfresco evening.

I also invite you to sample typical Queensland hospitality in the tranquil, tropical garden surrounds of the Cairns Colonial Club Resort, to slow down and experience the rich diversity of the region.

The city of Cairns is the gateway to Tropical Queensland and is embraced by vast areas of world heritage-listed Wet Tropics and Great Barrier Reef.

So whether you take a few days to enjoy friendship through flowers or choose to stay on and holiday, I extend a very warm Queensland welcome to the city where 'The rainforest meets the sea'.

Angela Lewis

President
Far North Queensland Floral Art Designers Inc.

*The Floral Art Society of Queensland Inc .in conjunction with the Far North Queensland Floral Art Designers Inc. wish to welcome you to Cairns to share & enjoy
'L'Amour de Fleurs'
'The Love of Flowers'*

SCHEDULE

'L'Amour des Fleurs'

Class 1 Queensland Championship 'L'Amour des Fleurs'

'An exhibit staged on a 1.0 m x 1.0 m cream colored baseboard supplied. Space allowed – 1m x 1m (height unlimited). To be viewed & judged all round. Carpet is dark blue.'

1st Prize \$200 2nd \$100 3rd \$50

Class 2 'Structured in the Tropics'

Staged on a '60cm x 60cm cream colored cube. Space allowed 60cm x 60cm (height unlimited). To be viewed & judged from front and sides. Background wall is cream.'

1st Prize \$50 2nd \$30

Class 3 'Rainforest Symphony'

'Bench work staged on 75cm high trestles covered with white tablecloth, bench top overlaid with cream matte plastic - background cream. Space allowed 80cm x 75cm deep.'

1st Prize \$50 2nd \$30

Class 4 'Elevated Elegance'

'To be staged on 80cm x 80cm x 80cm high cream colored form. Space allowed 80cm x 80cm (height unlimited). Background is cream.'

1st prize \$50 2nd \$30

Class 5 'Imaginary Birds'

'Verandah exhibit staged on a 1.2m high stand consisting 8cm diameter green/yellow bamboo pole topped with 25cm square black metal latticed grid. Space allowed 60cm x 60cm (height unlimited). Viewed and judged all round. The exhibit must be constructed to withstand verandah breezes (no air conditioning).'

1st Prize \$50 2nd \$30

Class 6 'Tropical Cascade'

'A *light-weight* hanging design, to be draped over 1st floor wooden foyer staircase banister rail (See photo following Show Rules). Viewed and judged from foyer below. Space allowed 40cm wide x 40cm deep x 80cm drop. Banister rail is approx 12cm wide. The design must be pre-constructed & allow for securing over banister rail with a soft cord, under the supervision and assistance of the stewards.'

1st Prize \$50 2nd \$30

Class 7 'Beach Treasures'

'A lightweight collage constructed to hang vertically on wall. Space allowed 40cm wide x 55cm long x 15cm deep. Exhibit must be pre-constructed complete with mechanism on back to allow for hanging off a picture hook. Background is cream.'

1st Prize \$50 2nd \$30

Class 8 'Mon Chapeau' – A wearable hat or fascinator.

'An exhibit staged on a 40cm x 40cm x 80cm high cream plinth. Space allowed 40cm x 40cm Maximum size for hat allowed 50cm x 50cm (Exhibitor to provide own staging props). Viewed & judged from front & sides. Background cream.'

1st Prize \$50 2nd \$30

Class 9 Impose 'Passionate about Palms'

'Competitors should be onsite 15 minutes prior to staging time for a steward's briefing. Each competitor permitted to bring one pair of cutters / secateurs / scissors only – all materials will be provided. A limited selection of shared tools/mechanical aids will also be available for use. Competitors may use as much or as little of material provided to complete their exhibit. Staging is on trestles.'

1st Prize \$50 2nd \$30

Class 10 Impose 'French Flavours'

'Competitors should be onsite 15 minutes prior to staging time for a steward's briefing. Each competitor permitted to bring one pair of cutters / secateurs / scissors only – all materials will be provided. A limited selection of shared tools/mechanical aids will also be available for use. Competitors may use as much or as little of material provided to complete their exhibit. Staging is on trestles.'

1st Prize \$50 2nd \$30

Class 11 State Exhibits NON COMPETITIVE foyer display on white tile

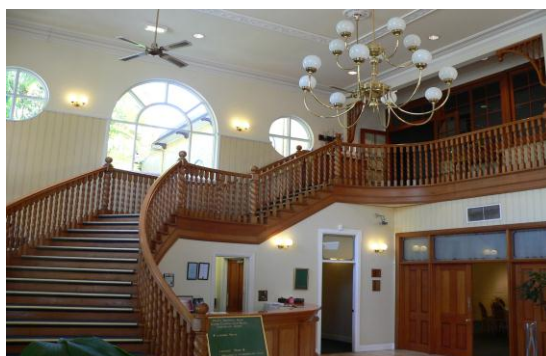
'A non-competitive club exhibit to be constructed in the foyer by a maximum of 3 people. To be staged on 80cm x 80cm sq x 50cm high white form. Space allowed 1m x 1m (height unlimited). Floor is white/grey marbled tile.' **Clubs to choose from the following titles:**

'A Tropical Welcome', 'French Fanfare', 'Tropical Impact', 'Bamboo Fantasy', 'Tailored for the Tropics'.

Class 12 Club Exhibits garden display (Must be able to withstand wind)

Show Rules for the Exhibitors

1. Plant material must dominate over all other components of the design.
2. The use of artificial plant material is **not allowed**.
3. Living plant material eg. Bromeliads and succulents, not in water, must last for the duration of the show.
4. All entries are judged on the elements & principles of design.
5. The judges' decision is final.
6. Exhibitors are responsible for watering their own exhibits.
7. Exhibitors are responsible for their own belongings.
8. Painted and or artificially coloured plant material may be used.
9. The society reserves the right to restrict the number of entries according to the space provided.
10. Competitors need to take care not to encroach on another's space when preparing their exhibit.
11. No aerosol / spray painting permitted in the venue.
12. Competitors are requested to ensure that no water is spilt on the carpets and worksheets / dropsheets should be used during staging of competitions.



Note the top rail for hanging Class 6.

Venue - All walls and backgrounds of the exhibition area are cream, carpets are dark blue with small gold fleck.

There is no lift to the upper floor.

LOCAL SUPPLIERS

(Roses- Mareeba Roses

Nicole Dixon-Mills)

mareebaroses@activ8.net.au

Ph/Fax: (07) 40921754

Roseburra Gardens

(Roses)

(Eve-Lyn McGrath)

roseburra@roseburragardens.com.au

Ph: (07) 40953648

Fax: (07) 40952505

Moerman Anthurium

(Anthurium flowers & foliage)

(Pieter & Ilona Moerman)

info@moerman-anthurium.com

Ph: (07) 40952509

Basilisk Blooms

(Heliconia, gingers & tropical foliage)

(Charlie & Josie Piccolo)

Ph/Fax: (07) 40642228

Flower Central NQ

(General flower/foliage wholesaler for the region – a 5 minute stroll from Colonial Club Resort)

(Tony Jones) tony@flowercentral.com.au

Ph: (07) 40537688 Fax: (07) 40535277

Tropical Flowers Cairns (Donagh & Paul)

Email: info@tropicalflowerscairns.com.au

Web: www.tropicalflowerscairns.com.au

Mob: 0417 794 799 (Donagh) 0417 213 821 (Paul)

Fax: 07 4039 2740

(Floral Sundries)

Cairns Floral Supplies

(Kearley Dent)

cairnsfloral@optusnet.com.au

Cnr Scott/Aumuller Sts, Cairns

Ph: (07) 40521868 Fax: (07) 40521858

Cairns is the gateway to Tropical North Queensland & sited between 2 World Heritage listed areas – the Great Barrier Reef & the Daintree Rainforest, both homes to amazing biodiversity & wildlife. Enjoy the stunning hinterland of the Atherton Tableland or take the Skyrail cableway to Kuranda. The maximum temperature in October is 30 Deg C. with occasional showers. The relaxed tropical lifestyle means dress is light & informal. Pack loose comfortable clothing, walking shoes & sandals, include sunglasses & a hat.

Cairns is a small but vibrant city so getting around is easy. The Airport is only 7 kms from Cairns city centre. Airport Connections makes transport easy, comfortable, & reliable in their air-conditioned vehicles. They offer a meet & greet service & regular transport from the Cairns Airport to your chosen hotel or motel. Transfer Fees from \$10 / person. Cairns Colonial Club operates a courtesy airport arrivals/departures transfer for guests, as well as a city centre shuttle bus service (\$3 each way). Rusty's Market on Friday, Saturday & Sundays sells everything from jewellery to fresh tropical fruit & flowers.

Accommodation.

The Cairns Colonial Club is offering a very competitive accommodation package for the conference with 345 rooms info@cairnscolonialclub.com.au +61 7 4053 8800

reservations@cairnscolonialclub.com.au

Plenty of alternative accommodation options are available including caravan/camping, within 1.5 Km radius of the venue by either searching the web or travel brochures.

FASQ would like to acknowledge & thank the following Sponsors for their support

inspirational
yet achievable
floral design
magazine



*Irene Cuskelly
Margaret Ferris
Robyn Jones
Mitchelton Garden Club
Caloundra Floral Art Society Inc
Floral Art Society of Caboolture Inc
Grafton Floral Art Society Inc.
Ingham Floral Art Group
Nambour Floral Art Society
Peninsula Floral Art Group
Proserpine Floral Art Group
Redlands Floral Art Society
Southside Floral Art Society Inc
Springsure Floral Art Group
Toowoomba Floral Art Group
Irene McIndoe
Pat Killoran
Glad Wendt
Loreley Tulk
Elaine Olm
Herta Vasiloudis
Eleanor Lydon
Victorian Floral Art Judges Assn.
Chinchilla Floral Group
Tesselaars Flowers (Qld)
Cairns Colonial Club
Floral Design
Smithers Oasis
Apack
National Flower Working Group
ABC Gardening Australia
Keith & Angela Lewis
Botanica Design
FNQ Floral Art Designers Inc
Clint Mallet Web Design*



Interested sponsors & supporters will be given publicity on all future publications.